

# TRADEWIND

## WINDOWS

**Series 4.0 & 6.0**  
Louver Jalousie Strip Hardware

### Features:

**1½" Aluminum Channels**

**Finish/Colors:**

Bronze Anodized

Satin Anodized

White Powdercoat

**1½" Vinyl Channel**

**Colors:**

White

Almond

**Solid, Durable, Components**

**Resilient ASA Polymer Blade Clips**

¼" Clips for Glass & Aluminum Blades

¾" Clips for Aluminum, PVC & Wood Blades

Colors: Almond, Black, Gray & White

**4" & 6" Louver Jalousie Blades**

**Quick Change Blade Clips**

(No need to remove hardware channel)



### Benefits:

**Enjoy Maximum, Natural Ventilation**

**Weather-Tight Closure**

**Corrosion Resistant Components**

**Easy Cleaning**

**Manufactured in Hawaii**

**Fast Turnaround Time**



### Louver Jalousie Blade Options:

- 4"** ¼" Glass Clear, Gray, Bronze Tint, Etched & Low E
- ¼" Aluminum White Powdercoat, Satin & Bronze Anodized
- ¾" Aluminum White Powdercoat, Bronze Anodized
- ¾" PVC White
- ¾" Interlock or Tapered Sapele Wood
- 6"** ¼" Glass Clear, Gray, Bronze Tint, Etched & Low E
- ¼" Aluminum Woodgrain
- ¼" Tapered Sapele Wood

**808-487-9041**



**RMA SALES**

**www.rmasalesco.com**

**Locally Owned & Operated Since 1961**  
**99-134 Waiua Way, Aiea HI 96701**



**4" TRADEWIND STRIP SIZES****SINGLE OPERATOR**

11½"	3 Blades
15"	4 Blades
18½"	5 Blades
22"	6 Blades
25½"	7 Blades

**DOUBLE OPERATOR**

29"	8 Blades
32½"	9 Blades
36"	10 Blades
39½"	11 Blades
43"	12 Blades
46½"	13 Blades
50"	14 Blades

**TRIPLE OPERATOR**

53½"	15 Blades
57"	16 Blades
60½"	17 Blades
64"	18 Blades
67½"	19 Blades
71"	20 Blades
74½"	21 Blades

**FOUR OPERATORS**

78"	22 Blades
-----	-----------

**6" TRADEWIND STRIP SIZES****SINGLE OPERATOR**

12"	2 Blades
17½"	3 Blades
23"	4 Blades
28½"	5 Blades

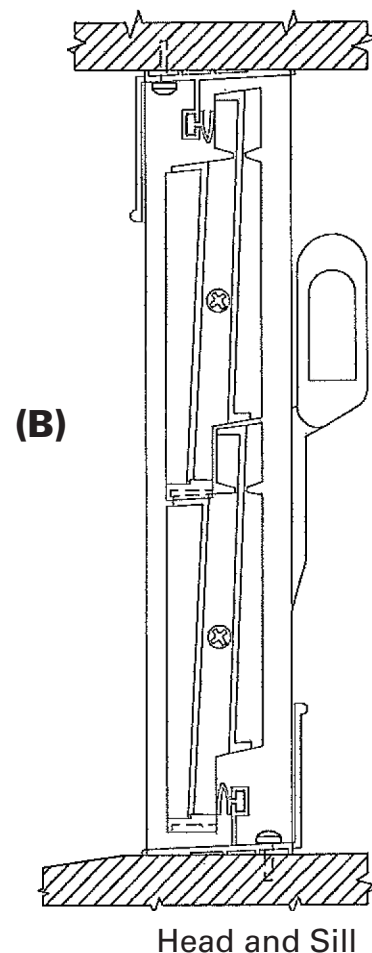
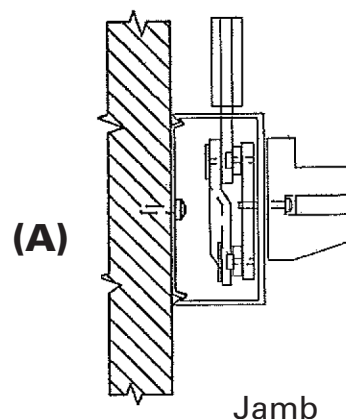
**DOUBLE OPERATOR**

34"	6 Blades
39½"	7 Blades
45"	8 Blades
50½"	9 Blades
56"	10 Blades

**TRIPLE OPERATOR**

61½"	11 Blades
67"	12 Blades
72½"	13 Blades
78"	14 Blades
83½"	15 Blades

**\* 2⅛" Deduction for  
Louver Jalousie Blades**



## INSTALLATION GUIDE TRADEWIND STRIP LOUVER HARDWARE

- 1) Before Installing Jalousie Hardware, window operating should be plumb and square.
- 2) Aligning of Hardware in window opening should be positioned so when Jalousie Blades are in the fully opened position they do not interfere with the exterior insect screen.
- 3) After locating the proper position, install the aluminum back plate, (Diagram A) using #8 x 1" PH SMS stainless steel screws to the jambs, making sure both sides are in alignment.
- 4) Install Aluminum Hardware channels with the Jalousie clips in the open position. Snap on channels to the aluminum back plate making sure channels are securely fastened from top to bottom. Use #8 x 1¼" FH SMS at each end of channel.
- 5) To install head and sill weather strips, cut the extruded aluminum stops to the width of the window jamb to jamb. Notch out ¾" of the base (ribbed side) of extrusion from each and leaving the one side to extend past the louver channel and up the window jamb. Use #8 x 1" PH SMS stainless steel screws (Diagram B) to secure the weather strips to the head and sill.  
Drill one ⅜" diameter hole through upstand containing PVC Weatherseal midway between jambs to drain any moisture on sill.

